

Uxbridge Official Plan Review: Residential Intensification Analysis

Project:

Residential Intensification Study

Client:

Township of Uxbridge, Ontario

The Opportunity:

Propose potential policy directions for the Official Plan Review to address residential intensification.

MSH Genuine Results

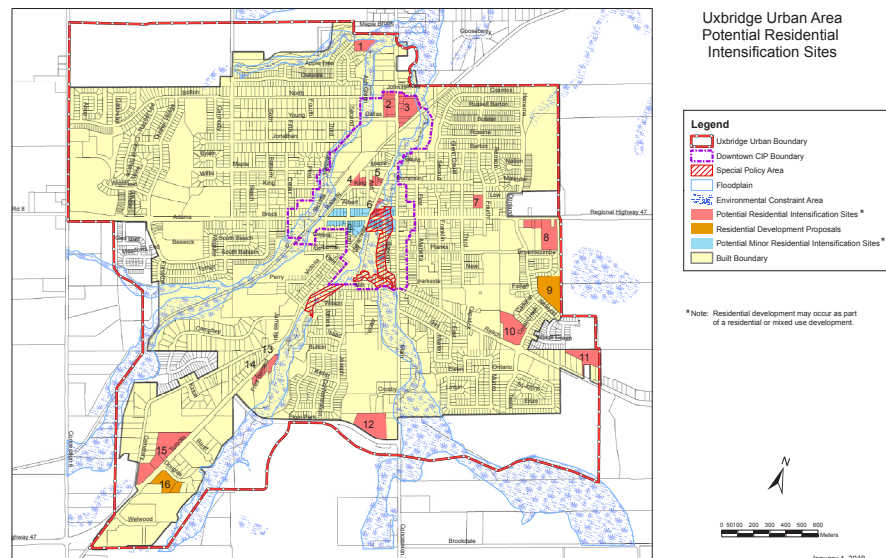
Undertaken as part of the Township's Official Plan Review, the Residential Intensification Analysis for the Uxbridge Urban Area examines where residential intensification within the Town could occur, and what the population increase might be as a result.

The potential intensification sites were determined using Township records, air photo interpretation and site visits. The identified sites include:

- Existing approved, but undeveloped sites;
- Potential residential underdeveloped sites including vacant or underdeveloped parcels;
- Sites which are subject to current development proposals; and,
- Sites in the Downtown with may have potential for minor residential intensification through the addition of second floor residential or redevelopment.

The study recommendations included the establishment of a number of additional criteria for the evaluation of new residential development in established areas, which are intended to ensure that new development is sympathetic to the existing character of the surrounding area.

The Analysis ultimately concluded that while intensification in the existing stable residential areas would be limited, there is potential to reach the Region's residential intensification target, subject to the availability of servicing capacity.



Macaulay Shiomi Howson Ltd
600 Annette Street
Toronto, ON M6S 2C4
T: 416-487-4101
F: 416-487-5489

471 Timothy Street
Newmarket, ON L3Y 1P9
T: 905-868-8230
F: 905-868-8501