

## Derry Green Corporate Business Park Secondary Plan

**Project:**

Industrial/Business Park  
 Secondary Plan

**Client:**

Town of Milton, Ontario

**The Opportunity:**

Develop a comprehensive secondary plan to reflect the strong sense of community and the environment.

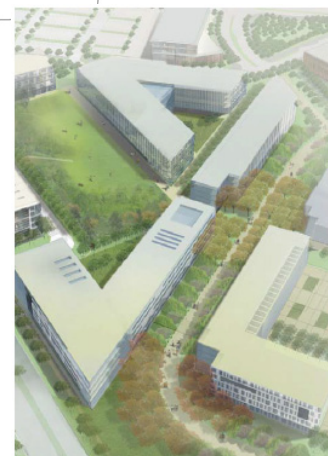
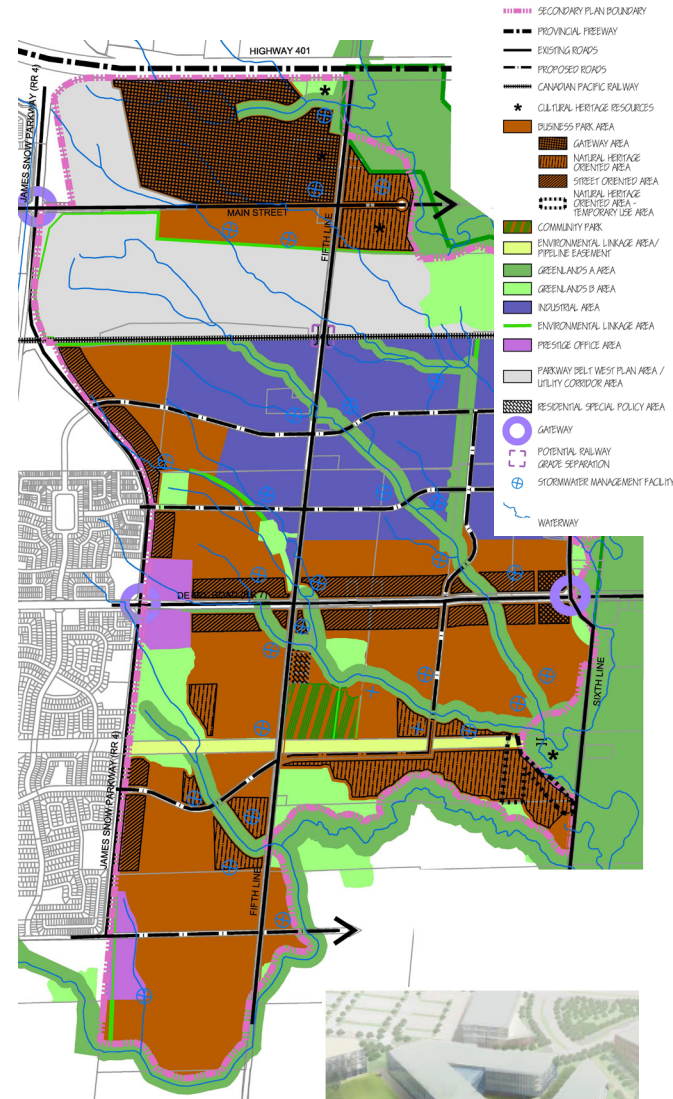
**MSH Genuine Results**

MSH led a multidisciplinary team in the preparation of a Secondary Plan for the Derry Green Corporate Business Park (Business Park II). This area will accommodate the majority of the Town of Milton's future employment growth.

The Secondary Plan is designed to create a comprehensively planned, high quality, corporate business park with a significant component of office and other prestige uses. It will have approximately 17-18,000 employees based on an assumption of approximately 45 employees per net hectare. This area will also serve as a gateway to the Urban Area and, as such, will reflect the strong sense of community and the environment.

The Derry Green Corporate Business Park will be based on strong design requirements to ensure the achievement of quality development, while providing for a full range of employment uses in a variety of different environments.

These will include prestige offices, campus settings in close proximity to the Greenlands/Natural Heritage and Open Space System; street-related employment uses and traditional industrial employment. In addition, a community park and complete trail system has been planned.



Macaulay Shiomi Howson Ltd  
 600 Annette Street  
 Toronto, ON M6S 2C4  
 T: 416-487-4101  
 F: 416-487-5489

471 Timothy Street  
 Newmarket, ON L3Y 1P9  
 T: 905-868-8230  
 F: 905-868-8501