

Whitetail Centre Commercial Development, Ajax

Project:

Planning Services for Commercial Development

Client:

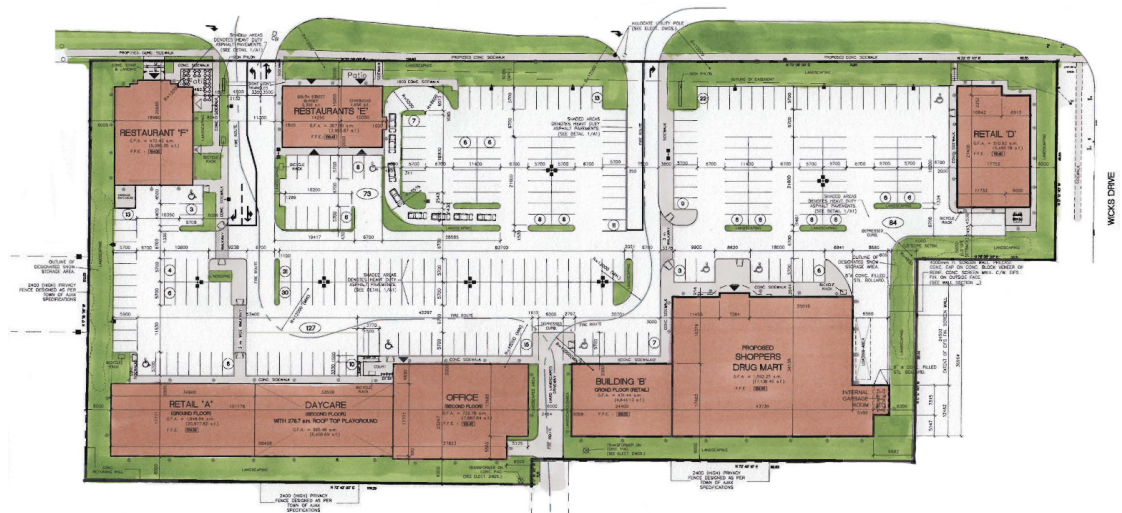
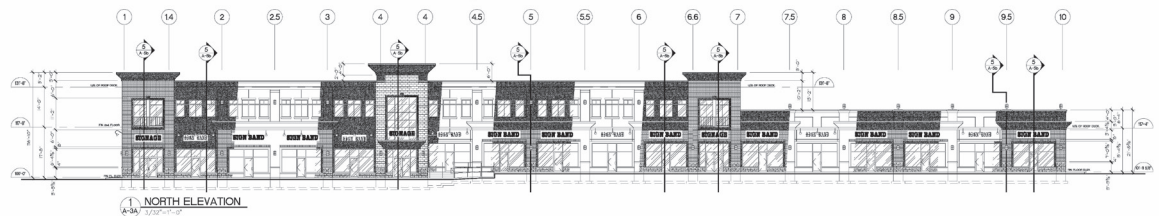
Whitetail Properties Inc.

The Opportunity:

?????

MSH Genuine Results

This 3.2 hectare site involved the assembly of seven large residential properties along a busy arterial road in Ajax. Subdivision, rezoning and site plan applications were submitted to create a commercial plaza with 7,000 sq metres (75,000 sq ft) of space and the extension of an existing residential street to create 36 semi detached lots. The commercial plaza met the design objectives of the municipality to improve pedestrian comfort and animation along the streetscape by bringing buildings close to the road and through the articulation of the buildings. It was also designed to buffer the adjacent low density residential development through the provision of a fairly continuous wall of buildings backing onto the residential. The commercial site contained one 2 storey building to provide for office and day care space to serve the surrounding community.



Macaulay Shiomi Howson Ltd
600 Annette Street
Toronto, ON M6S 2C4
T: 416-487-4101
F: 416-487-5489

471 Timothy Street
Newmarket, ON L3Y 1P9
T: 905-868-8230
F: 905-868-8501